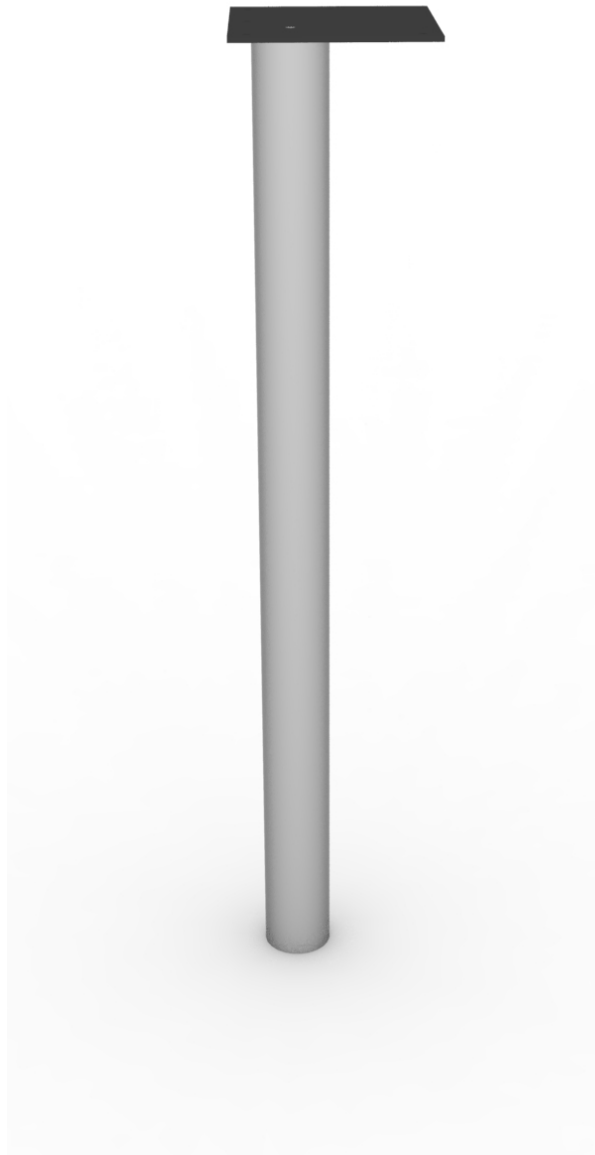


MSA Industries

2" Round Post Leg Assembly Instructions



MSA Industries

3321 W Castor St.
Santa Ana, CA 92704

www.MSAContract.com

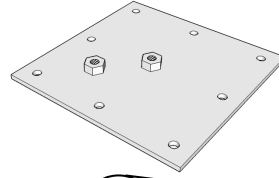
P: (844) MSA-Info
F: (714) 850-1777

IMPORTANT NOTE!

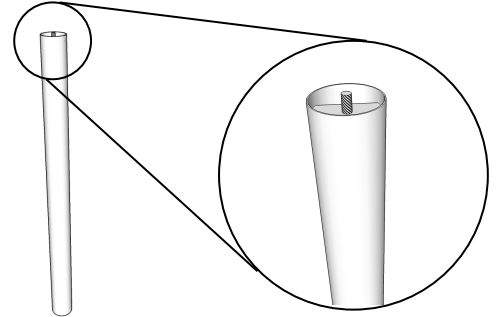
- If you need assistance with assembly instructions, please call 1 (844) MSA-Info
- MSA Table Legs DO NOT include table mounting hardware (i.e. screws)
- No tools are required for the assembly of this product

List of Parts:

A. (Mounting Plate)



B. (Metal Post)

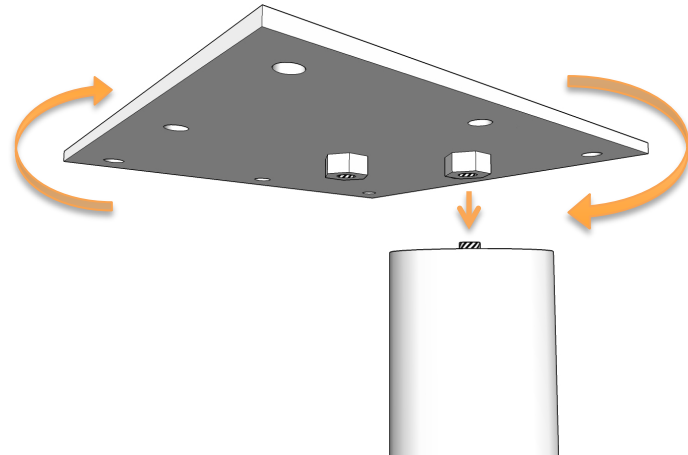


1 Attaching Plate to Post

The metal post (**Part B**) has a glide (leveler) in one end, and a threaded bolt in the opposite end. Find the end with the threaded bolt and face upwards. There are two options for mounting the plate to the post:

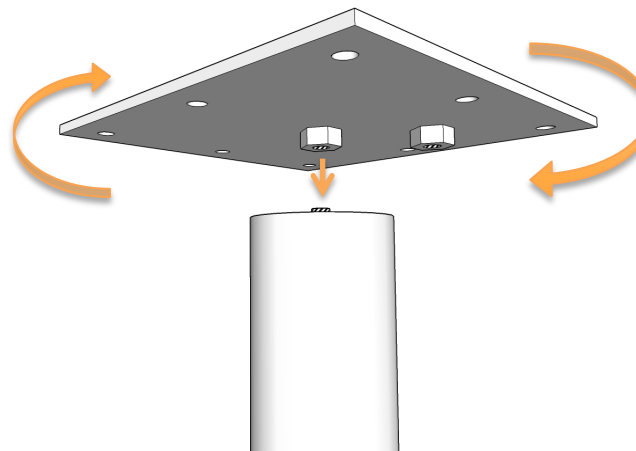
A. Corner Mounting (*Most Common*):

Place the off-centered welded nut of the mounting plate (**Part A**) downward onto the bolt of the post. Spin the plate clockwise until it is tight.



B. Center Mounting (*More Support for Heavier Tops*):

Place the centered welded nut of the mounting plate (**Part A**) downward onto the bolt of the post. Spin the plate clockwise until it is tight.

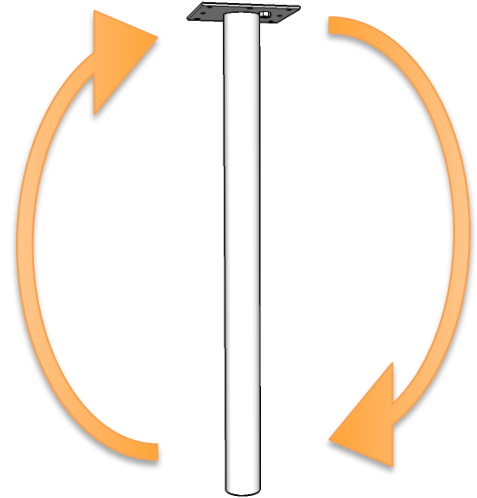


2 Tightening the Plate

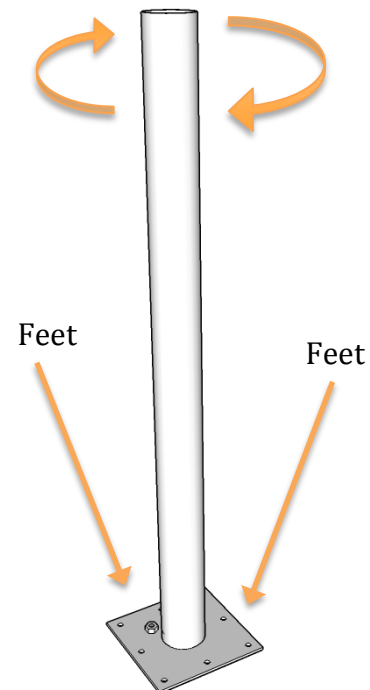
The mounting plate must be securely fastened to the post for a trouble free installation. There can be **NO GAP between the post and the mounting plate.*

**If the plate and post are not thoroughly tightened the leg will wobble after time.*

- A. Flip leg upside down so the plate is resting on the ground.



- B. Place your feet firmly on the plate to prevent it from moving and twist the post clockwise to ensure the plate and post are securely fastened together. You cannot over tighten. There should be no gap between the post and the mounting plate.



- C. You can now assemble the leg to the table top.